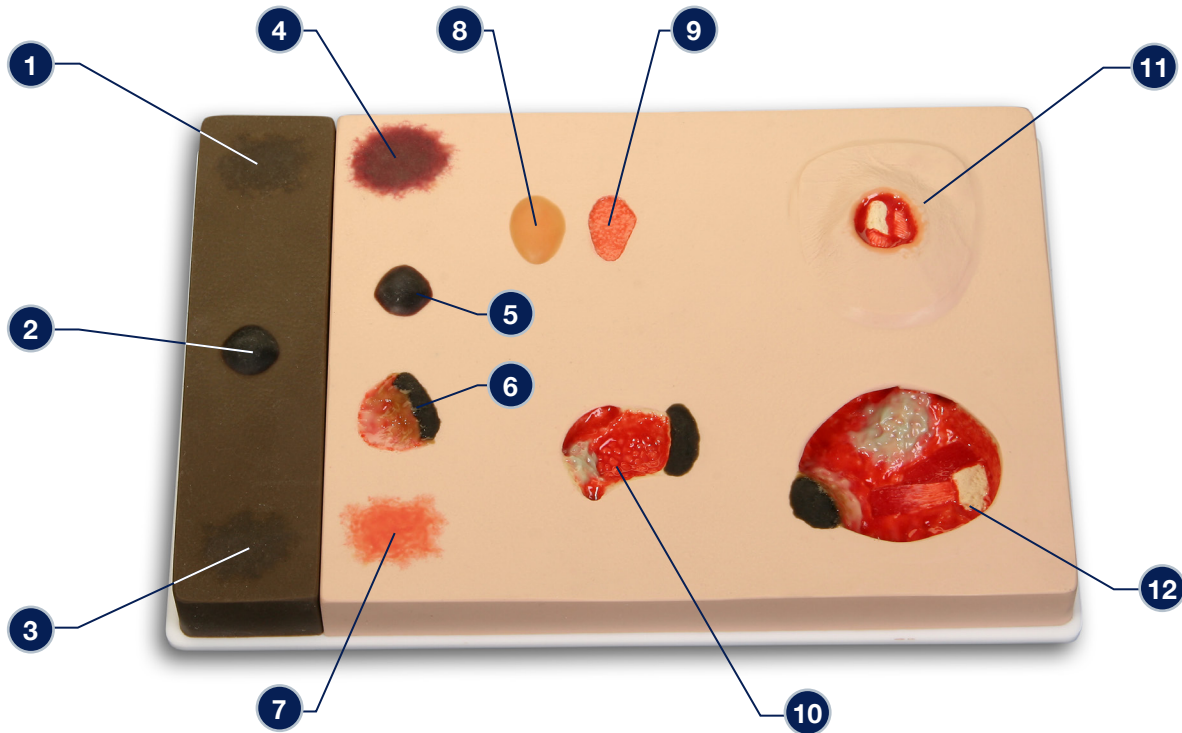


## Pat Pressure Injury Staging Model™ – 0980



### The following pressure injuries\* and wounds are presented on *Pat Pressure Injury Staging Model™*

- 1 DTPI (Deep Tissue Pressure Injury) with “mushy/ boggy” feel when palpated on a darkly pigmented individual
- 2 Blood blister on a darkly pigmented individual
- 3 Stage 1 pressure injury on darkly pigmented individual, can also appear as “ashen gray”
- 4 DTPI (Deep Tissue Pressure Injury) with “mushy/ boggy” feel when palpated
- 5 Blood blister
- 6 Unstageable eschar/slough wound
- 7 Stage 1 pressure injury
- 8 Stage 2 Blister, intact
- 9 Stage 2 pressure injury
- 10 Stage 3 pressure injury with undermining, tunneling, granulation tissue, subcutaneous fat, eschar and slough
- 11 Stage 4 pressure injury of malleolus, with exposed tendon and bone (with osteomyelitis)
- 12 Stage 4 pressure injury with exposed tendons and muscle, undermining, tunneling, slough, eschar, subcutaneous fat and bone (with osteomyelitis)

\* We have included the most likely etiology-based descriptions, but realize many wounds can appear in the same location, having different etiologies. The definitive diagnosis is up to the clinician and interprofessional wound care team.

**Care Instructions:** To clean your model **VATA** recommends soap and warm water. Some customers have found applying a barrier/skin prep can give them the adhesion they are looking for.

