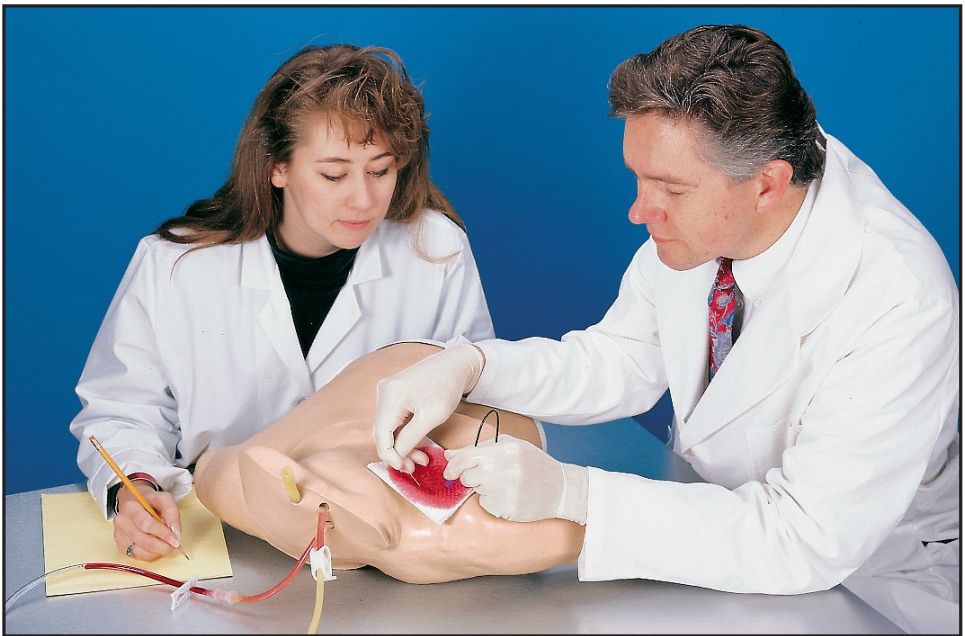


Dedicated to Delivery
Nasco
Life/form®

3 Life/form.
Year
Warranty
Simulators
& Trainers

Heart Catheterization Simulator LF01012U Instruction Manual



**CAUTION: PRODUCT CONTAINS DRY NATURAL RUBBER.
DO NOT REMOVE FILM FROM TUBING!**

Life/form® Products by Nasco

About the Simulator

The **Life/form®** Heart Catheterization Simulator is the ideal way to train staff in the techniques of central venous catheterization without patient risk.

Venous catheterization and the use of a Swan–Ganz catheter can be practiced at all common sites of the upper torso (subclavian, jugular, and peripheral).

Preparation of the puncture sites and bandaging techniques may also be practiced with no fear of infection or harm to a patient.

Note: Some compromise in the position of the arm was necessary in the simulator to allow both peripheral and central catheterization. The right arm is slightly abducted, and the forearm is pronated. It is not necessarily the usual position for this procedure.

List of Components

- Replaceable Skin
- Vein Tubing Sealant Kit
- Needles
- **Life/form®** Venous Blood (1qt.)

Set Up Procedure

A. Prepare Synthetic Blood

Concentrated blood colorant is provided. Dilute the concentrate by filling the container with water.

B. Fill Supply Bag

Pour the colorant into the supply bag. Be certain the pinch clamp on the supply line is closed.

C. Connect to Simulator

Attach the connector on the end of the supply line to the matching connector on the simulator.

D. Fill System

Open the two pinch clamps on the simulator. Allow the system to be filled by opening the clamp on the supply line. Once the system is full, close both pinch clamps on the simulator. **DO NOT** close the pinch clamp on the supply line.

E. The simulator is now ready for use.

Skin and Tubing Replacement

Note how the tubing is laid out in the simulator while removing. This will make reassembling with new tubing easier.

- A. Remove clamps, connector, and shoestring.
- B. Lubricate exterior of outer skin with **Life/form®** Lubricant Kit (LF00985U).

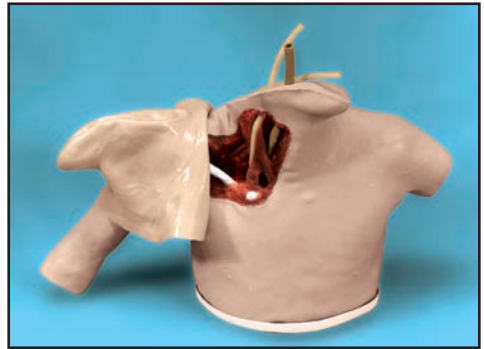


Figure 1

- C. Starting at the left shoulder, turn the skin inside out over the neck and chin area. (**See figure 1.**)
- D. Continue turning skin inside out down the entire length of the arm.
- E. Remove the white cover at the base of the simulator.

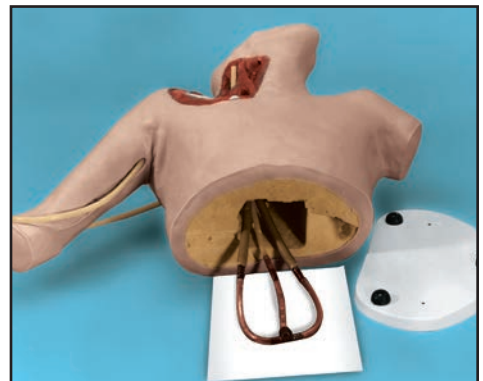


Figure 2

- F. Pull the damaged tubes out the base of the simulator. (**See figure 2.**)

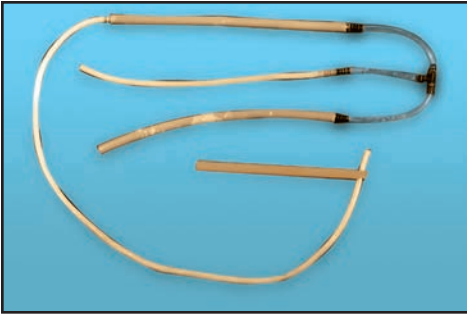


Figure 3

- G. Lubricate the new tubing with **Life/form®** Lubricant Kit. (See **figure 3.**) **DO NOT REMOVE FILM FROM TUBING.** The new tubing can be inserted into the dissected area of the shoulder by attaching it to the wooden dowel. (See **figure 4.**)

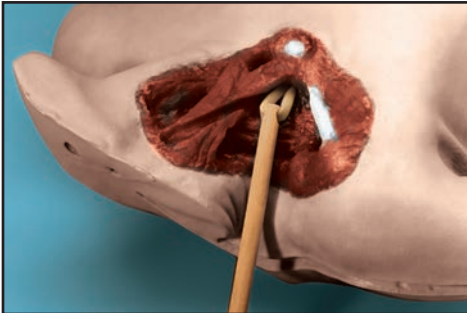


Figure 4

- H. Position tubing in vein channels.
 I. Lubricate the inside of new skin with **Life/form®** Lubricant Kit (LF00985U).
 J. Slide new skin onto body.
 K. Connect clamps, connector, shoestring, and cover.
 L. The simulator is now reconditioned and ready for use.

Care of the Simulator

Store simulator in the accompanying carrying case. The simulator can be cleaned with Ivory® liquid soap and warm water. Use Nasco Cleaner (LF09919U) to remove stubborn stains. Spray soiled area and wipe with soft cloth or paper towels.

Cautions

Solvents or corrosive materials will damage the simulator. Never place simulator on newsprint or any kind of printed paper or plastic. These materials will transfer an indelible stain. Ball-point pen ink will also make an indelible stain.

Supplies/Replacement Parts for the Heart Catheterization Simulator

- LF00845U** **Life/form®** Venous Blood (1 qt.)
LF01099U Vein Tubing Sealant Kit
LF01013U Replacement Skin and Vein Set
LF00985U **Life/form®** Lubricant Kit
LF09919U Nasco Cleaner

Other Available *Life/form*® Simulators

- LF00698U** Adult Injectable Arm (White)
- LF00855U** Male Catheterization
- LF00856U** Female Catheterization
- LF00901U** Prostate Examination
- LF00906U** Ostomy Care
- LF00929U** Surgical Bandaging
- LF00957U** Enema Administration
- LF00958U** Pediatric Injectable Arm
- LF00961U** Intramuscular Injection
- LF00984U** Breast Examination
- LF00995U** Arterial Puncture Arm
- LF00999U** Pediatric Injectable Head
- LF01005U** First Aid Arm
- LF01008U** Intradermal Injection Arm
- LF01012U** Heart Catheterization (TPN)
- LF01019U** Ear Examination
- LF01027U** Peritoneal Dialysis
- LF01028U** Suture Practice Arm
- LF01034U** Suture Practice Leg
- LF01036U** Spinal Injection
- LF01037U** Hemodialysis Practice Arm
- LF01038U** Episiotomy Suturing Set
- LF01042U** Suture Kit
- LF01062U** Pelvic, Normal & Abnormal
- LF01063U** Stump Bandaging, Upper
- LF01064U** Stump Bandaging, Lower
- LF01069U** Cervical Effacement
- LF01070U** Birthing Station
- LF01082U** Cricothyrotomy
- LF01083U** Tracheostomy Care
- LF01084U** Sigmoidoscopic Examination
- LF01087U** Central Venous Cannulation
- LF01095U** Blood Pressure Arm
- LF01108U** Infant Intraosseous Infusion
- LF01121U** Advanced IV Arm
- LF01131U** Venipuncture and Injection Arm
- LF01139U** Advanced IV Hand
- LF01142U** Auscultation Trainer
- LF01143U** Testicular Exam
- LF01152U** Male & Female Catheter
- LF01155U** Advanced CPR Dog
- LF01162U** Venatech IV Trainer
- LF01174U** NG Tube & Trach Skills
- LF01184U** Venatech IM & Sub Q
- LF01193U** Special Needs Baby
- LF03000U** **CPARLENE**® Series
- LF03601U** Adult Airway Management Trainer with Stand
- LF03602U** Adult Airway Management Manikin
- LF03609U** Child Airway Management Trainer with Stand
- LF03616U** Child **CRISis**™ Manikin
- LF03617U** Deluxe Child **CRISis**™ Manikin with Arrhythmia Tutor
- LF03620U** PALS Update Kit
- LF03623U** Infant Airway Management Trainer with Stand
- LF03632U** Child Intraosseous Infusion/ Femoral Access Leg on a Stand
- LF03633U** Child Airway Management Trainer Torso
- LF03693U** **Basic Buddy**® CPR Manikin
- LF03699U** "Airway Larry" Airway Management Trainer
- LF03709U** Infant **CRISis**™ Manikin
- LF03720U** **Baby Buddy**™ Infant CPR Manikin
- LF03750U** Fat Old Fred
- LF03760U** Airway Management/Cricoid Pressure Trainer
- LF03770U** Chest Tube
- LF03953U** **CRISis**™ Manikin, Complete
- LF03955U** Deluxe **CRISis**™ Manikin
- LF03956U** Deluxe "Plus" **CRISis**™ Manikin
- LF03965U** Adult **CRISis**™ Auscultation Manikin
- LF03966U** Adult **CRISis**™ Auscultation Manikin with ECG Simulator
- LF04000U** **GERI**™/**KERI**™ Manikin Series
- LF04200U** Adult Sternal Intraosseous Infusion
- LF06001U** CPR Prompt® Adult/Child Manikin
- LF06012U** CPR Prompt® Infant Manikin
- LF06200U** CPR Prompt® Keychain Rescue Aid
- LF06204U** CPR Prompt® Rescue and Practice Aid

Nasco Fort Atkinson

901 Janesville Avenue, P.O. Box 901
Fort Atkinson, Wisconsin 53538-0901
1-800-558-9595

eNasco.com • E-mail: lifeform@eNasco.com

COPYRIGHT © NASCO 1982 PRINTED IN U.S.A. NP 043-82/RV 5-12